

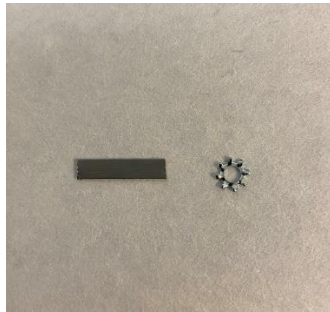
Centering and Securing Your Cap Driver

Note to Operator: Please follow these instructions carefully as missing a step could result in more issues with your machine. For immediate assistance and/or help performing these tasks, please contact PBG Support

About the repair: When sewing on caps it is important that your cap driver is centered and tight as this will enable you to have 270 degrees of sewing field (if desired) on a cap. If the cap driver is not centered and/or the cable on the cap driver is loose, you will have registration issues, broken needles, thread breaks, and more.

Tools you will need:

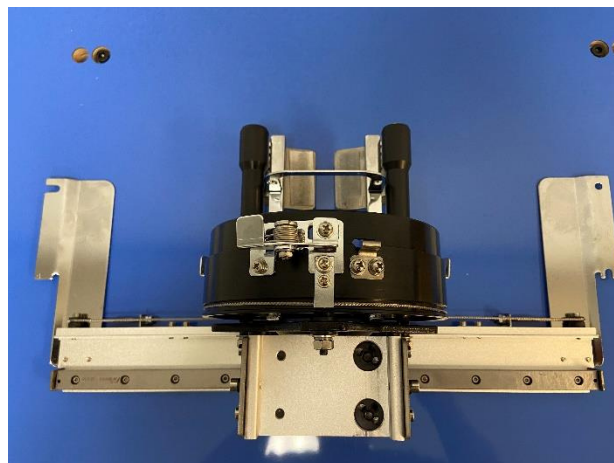
- Phillip's Head Screwdriver
- Small metal tab
- o Or small star washer



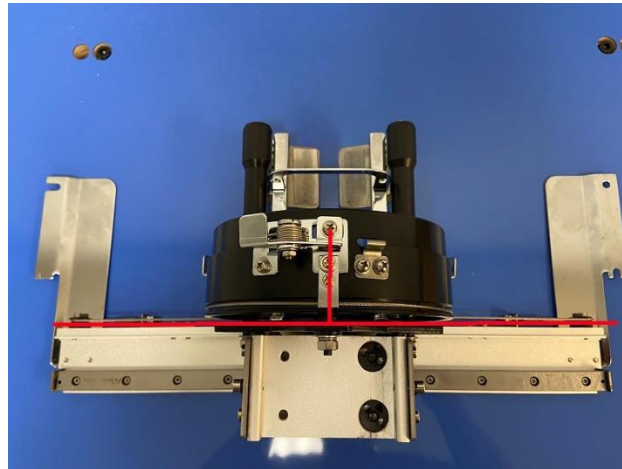
- Needle nose pliers
- 7mm wrench
- o Or small crescent wrench

Step by Step Instructions:

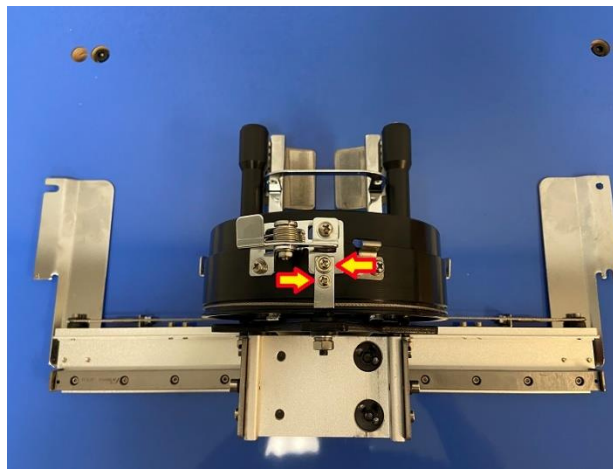
1. Place the cap driver on a flat surface as illustrated below:



2. Position the cap driver so the bottom lever is up on top and in the middle of the cable. You can measure this to make sure it is dead center in the cap driver.



- a. Tip: Loosen the two screws (illustrated below) to allow you to move the cap driver left and right in order to get it centered. You can do this by pushing on the black drum from one side to force it to slide on the cable (not rotate).



3. Loosen the two screws (illustrated above) place the small metal tab (or star washer) between the cable and silver bar so that the bar pinches the cable.



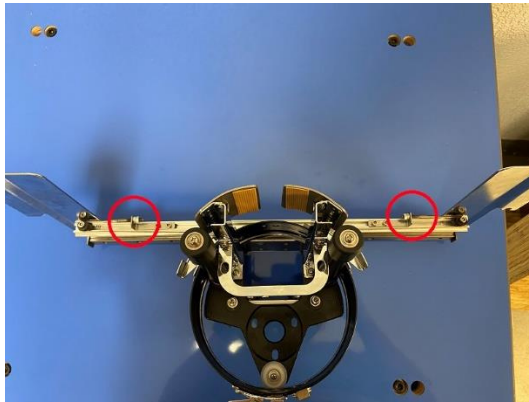
4. Tighten down the screws and make sure the metal tab is secure on the cable. Be sure to not over-tighten them as you can easily strip out the screw holes.

At this point, if all steps were followed properly, your cap driver is secure. If your cap driver is still slipping, make sure that the metal tab is under the silver bar, is pinching the cable properly, and that all screws are tight.

Tightening the Cap Driver Cable:

The cable on your cap driver should sound like a guitar string when plucked. If it does not, you may need to tighten this. Please use the instructions below to make sure the cable has proper tension.

1. On the cap driver, locate the two tensioners on either end of the cable.



2. Using a small 7mm wrench and a pair of needle nose pliers, tighten the nut on the end of the cable until the cable has enough tension on it to allow you to pluck it like a guitar string. You do not want a high pitch noise coming from the cable.



Once the cable has proper tension you should not have any more issues with your cap driver. If you are, please call PBG Support at 681-297-9892, option 2 for further assistance.